

ALIGN ENTERTAINMENT
PRESENTS



Disney
**BEAUTY
AND THE
BEAST**

JANUARY 26 TO FEBRUARY 10, 2024



MICHAEL J FOX THEATRE



ALIGN ENTERTAINMENT INC. PRESENTS

Disney's
BEAUTY AND THE BEAST

January 26 to February 10, 2024

Music by
ALAN MENKEN

Lyrics by
HOWARD ASHMAN &
TIM RICE

Book by
LINDA WOOLVERTON

Originally Directed by
Robert Jess Roth

Originally Produced by
Disney Theatrical Productions

Original Music Supervision and New Arrangements by Michael Kosarin
Dance Music Arrangements by Glen Kelly
Orchestrations by Danny Troob

Co-Producer / Director: Chad Matchette

Choreographer: Melissa Turpin

Musical Director: Kevin Woo

Co-Producer / Production Manager: Patti Volk

Co-Producer / Stage Manager: Sara Lohnes

Props Manager: Em Lohnes

Lighting Designer: Brad Trenaman

Technical Director: Alex House

Sound Designer: Kenneth MacDonald

Set Design: Jordan Stasuk, John Bradbury, Rob Newington, Dan Wiebe

Costumer / Head of Wardrobe: Jordan Chambers

Select Costume Design by: Chris Sinosich

SHOW PRODUCTION

Asst. Music Director: Jayda Grant

Asst. Stage Managers: Em Lohnes, Dan Wiebe

Backstage Crew: Abigail Besworth, Hannah Lohnes, Valentina Picariello

Carpentry / Set Build: Chersea, John Bradbury, Jodi Kaldestad, Clint Latimer, Rob Newington, Dan Wiebe

Costume Assistant: Kelsey Tierney

Dance Captain / Fight Captain: Jocelyn Tsui

Fight Director: Daniel Curalli

Follow Spot Operators: Chris Frederickson, Daniel Monaghan

Graphic / Program Designer: Em Matchette

Hair / Makeup: Ian and Jan Ballard

Head Flyman: Tony Hemsley

Lead Painter (Set): Jordan Stasuk

Lighting Board Op. / Head Electrician: Ben Paul

Load In Crew: Tony Hemsley, Adam Volk, Erik Volk

Mic Technician: Maxine Hamerton

Michael J Fox Theatre Technician: Ethan Knoll

Music Consultant: Brent Hughes

Production Crew: Dave McRae

Props Assistants: Abigail Besworth, Hannah Lohnes

Rehearsal Pianists: Peter Abando, Lia Wolfe, Arielle Ballance

Volunteer Coordinator: Heidi Barber



DIRECTOR'S MESSAGE

This one's hard...

Welcome to *Beauty and the Beast*, a wonderful show that I've wanted to produce for decades. I'm extremely proud of this show and hope you all enjoy seeing it as much as I've enjoyed working on it, it's not what I want to talk about here.

For more than 15 years I've had the absolute pleasure and honor of working with one of the most amazing individuals you could ever hope to meet... Patti Volk. As some of you may know Patti has decided to retire from Align Entertainment at the conclusion of this show. To say she will leave a massive set of shoes to fill would be the understatement of all time. Patti is the heart and soul of Align. From our first meeting to talk about the possibility of forming a new theatre company years ago to where we are today, none of it would have been possible without Patti. She has worked tirelessly to ensure that our productions achieve the highest possible standards in a sea of never ending budget issues, logistic problems, and even crazy requests and ideas from her co-producer and artistic director. She has met every challenge head on and successfully navigated her way through... she is amazing!

As most long time Align patrons know, you can always find Patti in the lobby or box office during our shows. If any of you would like to say "hi" and wish her well I'm sure she would love to hear from you... (she avoids the spotlight and will probably hate me for asking you to do this... lol)

We all love you Patti and wish you nothing but happiness as you start this new chapter... just remember, Sara and I still have your phone number so you're not totally getting away from us yet!

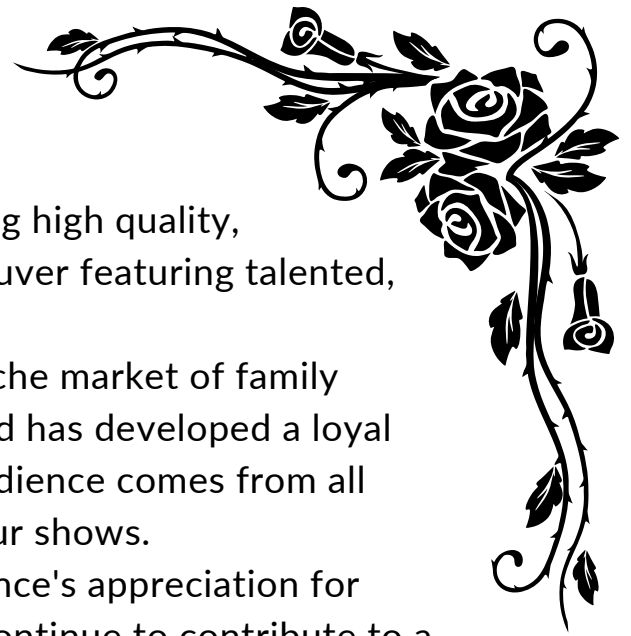


ABOUT ALIGN ENTERTAINMENT

Align Entertainment is in its 10th year of producing high quality, professional level musical theatre in Metro Vancouver featuring talented, passionate and dedicated artists and musicians.

Align has successfully identified and targeted a niche market of family entertainment that meets the needs of all ages and has developed a loyal following of performance arts enthusiasts. The audience comes from all corners of Metro Vancouver and tend to see all our shows.

It is our mandate to continue to engage our audience's appreciation for quality professional level musical theatre and to continue to contribute to a vibrant, thriving and creative community, and hope to deliver more shows in the years to come!



SPECIAL THANKS

ACT Arts Centre

Audition Assistants - Jesse Alvarez,
Kate Malcic, and Erin Matchette

Gearforce

Innovation Lighting

Peak Technologies

Royal City Musical Theatre

Royal City Youth Ballet

Theatre Under the Stars

Align Entertainment humbly acknowledges the land on which we have the privilege to live and work on is the traditional, ancestral, and unceded territories of the x^wməθk^wəyəm (Musqueam), S^kwxwú7mesh (Squamish), and Selílwitlh (Tseil-Waututh) nations.



The use of any recording device, either audio or video, and the taking of photographs, either with or without flash, is strictly prohibited.

Please turn off your cellphone.

AUTHOR BIOS



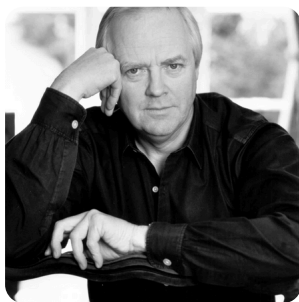
ALAN MENKEN

ALAN MENKEN (Composer). Theater: God Bless You Mr Rosewater, Little Shop Of Horrors, Real Life Funnies, Atina: Evil Queen Of The Galaxy, Kicks, The Apprenticeship Of Duddy Kravitz, Beauty And The Beast, A Christmas Carol, Weird Romance, King David, Der Glöckner Von Notre Dame, The Little Mermaid, Sister Act, Leap Of Faith, Aladdin and Newsies. Film: Little Shop Of Horrors, The Little Mermaid, Beauty And The Beast, Newsies, Aladdin, Pocahontas, The Hunchback Of Notre Dame, Hercules, Life With Mikey, Lincoln, Home On The Range, Noel, Enchanted, Shaggy Dog, Tangled and Mirror Mirror. Songs: Rocky V, Home Alone 2 and Captain America. Awards: 8 Oscars (19 nominations), 11 Grammys (including Song of the Year), 7 Golden Globes, Tony® (plus 4 nominations), Drama Desk, Outer Critics Circle, New York Drama Critics, Olivier and London's Evening Standard Award, Drama League. Honors: Songwriter's Hall of Fame, Doctorates from New York University and University of North Carolina School of the Arts.



HOWARD ASHMAN

Best known as a pivotal creative mind behind the renaissance of Disney animation and his work on The Little Mermaid, Aladdin and Beauty and The Beast (which is dedicated to, "Our friend, Howard Ashman, who gave a Mermaid her voice and a Beast his soul...") Ashman's first love was theater. Ashman was a founder of off off Broadway's renowned WPA Theater, where he conceived, wrote and directed God Bless You, Mr. Rosewater, as well as the classic musical, Little Shop of Horrors (both music by Alan Menken). In 1986, he wrote and directed the Broadway musical Smile (music by Marvin Hamlisch). Lamented as a lost treasure of the 1980's theater scene, Smile remains popular on High School and College campuses throughout the country. Howard Ashman died in 1991 from complications of AIDS. For more information, please visit howardashman.com.



TIM RICE

Tim Rice has worked in music, theater, and film since 1965, when he met Andrew Lloyd Webber, a fellow struggling songwriter. Rather than pursue Tim's ambitions to write rock or pop songs, they turned their attention to Andrew's obsession - musical theater. Their first collaboration, The Likes Of Us (lyrics by Tim, music by Andrew), was an unsuccessful show based on the life of Dr. Barnardo, the Victorian philanthropist. Their next three works together were much more successful: Joseph and the Amazing Technicolor Dreamcoat, Jesus Christ Superstar, and Evita. Tim has also worked with other distinguished popular composers such as Elton John (The Lion King, Aida), Alan Menken (Aladdin, King David, Beauty and the Beast), and Bjorn Ulvaeus and Benny Andersson (Chess). From Here to Eternity, with music by newcomer Stuart Brayson, coproduced with Lee Menzies, directed by Tamara Harvey, and with book by Bill Oakes, premiered in the West End at the Shaftesbury Theatre in 2013. He formed his own cricket team in 1973 and was president of the MCC in 2002. In 2013, he wrote and presented a 52-part series for BBC Radio 2, American Pie, a trawl through the music and musicians of every American State. He has won several awards, mainly for the wrong thing or for simply turning up.



LINDA WOOLVERTON

Linda Woolverton's writing credits include the screenplay for the animated feature film BEAUTY AND THE BEAST (Golden Globe winner and Academy Award Best Picture nominee); the screenplay (shared) for HOMEWARD BOUND: THE INCREDIBLE JOURNEY; screenplay (shared) for the animated feature film THE LION KING; the book for the Broadway musical BEAUTY AND THE BEAST (Tony Award nomination for Best Book of a Musical, winner 1998 Olivier Award Best New Musical); and book (shared) for Elton John and Tim Rice's Broadway musical AIDA. Also she has written two young-adult novels, STAR-WIND and RUNNING BEFORE THE WIND. She holds a Bachelor's degree in Theatre Arts from California State University Long Beach and a Master's degree in Theatre from California State University Fullerton. Linda is currently involved in writing and producing film projects for Miramax and Revolution studios. She lives in Los Angeles with her husband Lee Flicker and daughter Keaton.

Disney's Beauty and the Beast

Is presented through special arrangement with Music Theatre International (MTI).

All authorized performance materials are also supplied by MTI.

www.mtishows.com

BEAUTY AND THE BEAST CAST

A woman with long, wavy red hair is shown from the waist up, wearing a yellow Belle costume with a large bow on her shoulder. She is looking over her shoulder towards the camera. The background is a soft, light gradient.

Paula Higgins	Belle
Jacob Woike*	Beast
Chris Adams**	Cogsworth
Matthew Valinho	Lumiere
Sheryl Anne Wheaton	Mrs. Potts
Stuart Barkley**	Gaston
Em Matchette	Lefou
Steve Dotto**	Maurice
Rachel Scheibel	Babette
Elena Banares	Chip
Andrea Pizarro	Madame De La Grande Bouche
Annika Meekel	Les Filles De La Ville
Amy Jean McElwain	Les Filles De La Ville
Jocelyn Tsui	Les Filles De La Ville
Spencer Swift	Monsieur D'arque / Ensemble / Beast Understudy
Georgia Orchard	Narrator / Kids Ensemble / Chip Understudy
Angela Donahue-Lundin**	Ensemble / Mrs Potts Understudy
Angus Chiu	Ensemble / Maurice Understudy
Ava Gil	Ensemble / Wolf
Brodie Kyle Klassen	Ensemble / Lumiere Understudy
Brontë Gooselaw	Ensemble / Wolf / Swing
Dakota Hutchins	Ensemble / Gaston Understudy
Elisabeth Pollock	Ensemble / Les Filles Understudy
Elliette Latimer	Kids Ensemble
Emma Dotto	Ensemble / Madame Understudy
Grayson Besworth	Kids Ensemble
Hazel Kaldestad	Kids Ensemble
Jessica Wong	Ensemble / Enchantress / Belle Understudy
Kim Bunka	Ensemble
Leah Newson	Ensemble / Babette Understudy
Lucas Gregory	Ensemble / Young Prince / Wolf / Swing
Lulu Hughes	Ensemble / Wolf
Morgan Collins	Ensemble / Gargoyle / Cogsworth Understudy
Owen CB Scott	Ensemble / Wolf / Young Prince Understudy
Robin Sukorokoff	Ensemble / Gargoyle
Ryan Nuñez	Ensemble
Simon Abraham	Ensemble / Wolf / Lefou Understudy
Sophia Gharbi	Kids Ensemble
Sophia Pollock	Ensemble
Thomas Schultes	Ensemble / D'arque Understudy

*The participation of this Artist is arranged by permission of Canadian Actors' Equity Association under the provisions of the Dance Opera Theatre Policy(DOT).

**Appearing with the special Permission of Canadian Actors' Equity Association

MUSICAL NUMBERS

ACT ONE

Prologue
Belle
No Matter What
Maurice Travels
Me
Belle (Reprise)
Home
Gaston
Gaston (Reprise)
How Long Must This Go On?
Be Our Guest
If I Can't Love Her

ACT TWO

Entr'acte
Something There
Human Again
Maison Des Lunes
Beauty and the Beast
If I Can't Love Her (Reprise)
A Change in Me
The Mob Song
Home (Reprise)
Transformation / Finale
Ultimo

ORCHESTRA

Christopher Qiu	Bass
Maria Rossouw	Cello
Malcolm Francis	French Horn
Lia Wolfe	Keyboard 1
Peter Abando	Keyboard 2
Daniel Fortin	Percussion
Alice Hu	Reed 1
Teigan Paish	Reed 2
Jennifer Innanen	Reed 3
Lindsay Goldberg	Trumpet
Kevin McDonnell	Violin

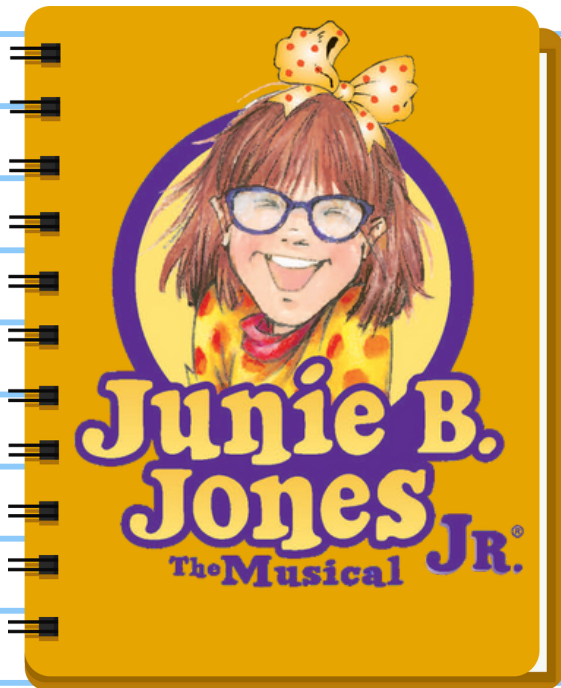


SUMMER CAMP 2024

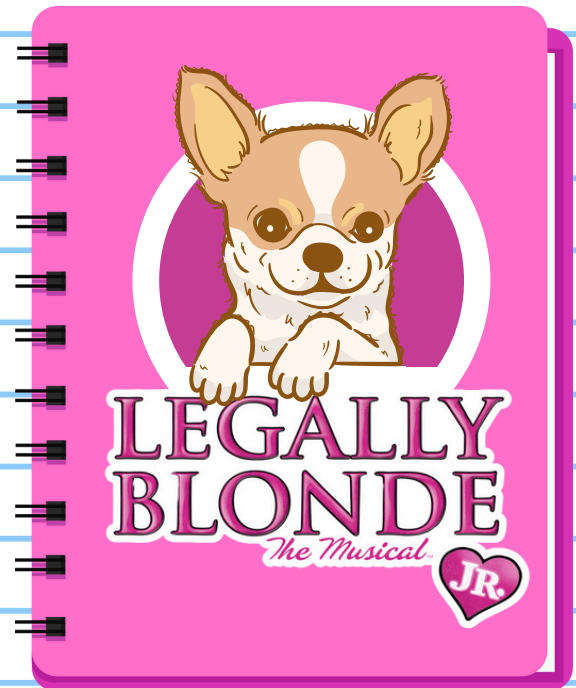
July 8th to 19th, 2024

Grab your notebooks because we're going to school for Summer Camp 2024 with Junie B. Jones JR and Legally Blonde JR! So much to experience within two action-packed weeks of musical theatre camp! For both the novice and the more experienced performer, all campers will prepare and perform in a fantastic double feature presentation on Friday, July 19th.

MINIS & JUNIORS
K-Gr 2 Gr 3-7



SENIORS
Gr 8-12



COST: \$620 (PLUS GST = \$651)

REGISTER NOW!

CAST



AMY JEAN MCELWAIN (she/her)

Les Filles De La Ville

Amy Jean is so excited to be making her debut with Align Entertainment in such a wonderful show. After graduating from Cap U's Musical Theatre Program in 2011, Amy spent 10 years touring Canada and the USA with Koba Entertainment in family favourite shows such as Shopkins! Live, Dora the Explorer, Toopy & Binoo, The Backyardigans, and more! In between tours she made Toronto her home until recently, when she moved back to Vancouver to pursue her Bachelor of Psychology (which she is currently working on). Having returned to university, Amy Jean took a couple years off from performing but couldn't resist the chance to dip her toes back into musical theatre through the magical world of Beauty and the Beast, reprising a role she played in one of her first musicals over 15 years ago. She hopes you enjoy this fun show as much as she has!

ANDREA PIZARRO (she/her)

Madame De La Grande Bouche

Andrea is thrilled to be part of one of her favourite musicals as her first show with Align Entertainment! As a graduate of Capilano University's Musical Theatre Program, she has previously appeared on the stage as Mrs Corry in Mary Poppins (TUTS), Dalila in The Cornwall's All Inclusive Cancun Christmas (Chemainus Theatre Festival), Miss Flannery in Thoroughly Modern Millie (Exit 22) and on the screen in Sacred Lies (Blumhouse Productions), Supergirl (The CW), and Dragged Across Concrete (Summit Entertainment). Andrea would like to thank the creative team for this opportunity, and her dad for always being her #1 fan.



ANGELA DONAHUE-LUNDIN (she/her)

Ensemble / Mrs Potts Understudy

Angela is thrilled to back on the stage with Align Entertainment after having previously appeared as Queen Lillian and Granny in Shrek the Musical. She has played many roles on many stages in the US and Canada. One of her fondest memories was performing in 42nd Street with Jerry Orbach, the voice of Lumiere in Disney's original animated Beauty and the Beast. Angela has numerous TV and commercial credits from A&W to the X-Files. She came to Canada from the US after meeting her husband Wayne while singing for Norwegian Cruise Lines. Now she spends her days as a music teacher in Coquitlam and teaches choir and musical theatre on the side for her travel account! Many thanks to family and friends for supporting my artistic pursuits.

CAST

ANGUS CHIU (he/him)

Ensemble / Maurice Understudy

Angus Chiu (Ensemble/Maurice U/S) is honoured and grateful to be in all TWELVE Align's productions (Guard Garry, The Gambler Ancestor, Mr. Coggins, Issachar x2, Windward, Pforzenheimer, Head Waiter, Bert Healy, Baby Bear and Mr. Mayor). He was the producer for The Wizard of Oz and Grease for Footlight, and A... My Name is Alice for Skycorner. As an actor,



selected credits besides all Align's productions include Frankie in Flower Drum Song (Vancouver Asian Canadian Theatre), Jesus Christ Superstar and The King & I (Theatre Under the Stars), Joseph... & Annie (Footlight Theatre), Promises, Promises (Metro Theatre). A CPA, CMA by trade, Angus is currently the treasurer for Patrick Street Productions.



ANNIKA MEEKEL (she/her)

Les Filles De La Ville

Annika is an artist located in the Lower Mainland and is thrilled to make her Align debut. She is a graduate of the Musical Theatre program at Capilano University, where she received her Diploma of Performing Arts, as well as the Vancouver Foundation's Mental Health Fine Arts Bursary and the Mike Jarvis Memorial Scholarship. Select credits include: The Wizard of Oz (CTORA), Fleetwood & Friends (Chemainus Theatre Festival), Out of This World (APPLAUSE!), Hope in Urinetown (CapU Theatre) and Into the Woods (CapU Theatre). She would like to make a special thank you to her family, friends and fiancé for their love and support.

AVA GIL (she/her)

Ensemble / Wolf

Ava is currently in Grade 12 at Burnaby North Secondary School and is so excited to be a part of her 6th production with Align Entertainment! Her previous shows with Align include: Joseph and the Amazing Technicolor Dreamcoat (x2), A Christmas Story, Annie, and Shrek. Ava has also been doing musical theatre and dancing at Lindbjerg Academy of Performing



Arts and is in her 11th and final year with the studio. She has always loved being on stage since she was little, and she is so grateful to have the opportunity to bring joy, smiles, and laughter to many audiences through theatre. Getting to work with this amazing cast and crew has been an incredible experience, and Ava can't wait for you all to join her in the enchanted castle. Enjoy the show!!!

CAST



BRODIE KYLE KLASSEN (he/him)

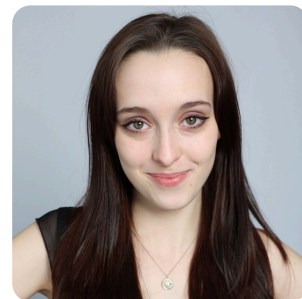
Ensemble / Lumiere Understudy

Brodie is a performing artist who works and creates on the stolen traditional territories of the x̣ṃəθḳʷəỵəm (Musqueam), Sḳẉx̣ẉú7mesh (Squamish), and səlilwətaʔ (Tseil-Waututh) Nations. A graduate of Capilano University's Musical Theatre Program and a recent graduate of Studio 58's Acting Program, he is delighted to be making his debut with Align Entertainment's *Beauty and the Beast*. Other past credits include: Ensemble in *The Prom*, Junior in *Crazy for You* (RCMT), Don in *A Chorus Line* and Phoebus in *Metamorphoses* (Studio 58), Sparky in *Forever Plaid* (First Impressions), Otto Kringlein in *Grand Hotel* (Arbutus Studio), and Phoebus in *The Hunchback of Notre Dame* (Secondary Characters). Brodie is grateful to be able to work with and have fun with other talented artists in musicals just like this one. Enjoy the show!

BRONTË GOOSELAW (she/her)

Ensemble / Wolf / Swing

This is Bronte's sixth show with Align, and she couldn't be more excited! Past credits include Show Person in *Curtains!* (Applause! Theatre Society), Marcellus in *Music Man* (Lindbjerg Academy), Babette in *Beauty and the Beast* (Lindbjerg Academy), Ensemble in *Seussical* (Align Entertainment), and Little Red Riding Hood in *Shrek* (Align Entertainment). She is



experienced in Contemporary, Jazz, Hip Hop and Musical Theatre. Thank you to everyone in the cast and crew for being so fantastic to work with! Enjoy the show.



CAST



CHRIS ADAMS (he/him)

Cogsworth

Chris is delighted to return to Align Entertainment after having flown through the skies as Scuttle the Seagull in *The Little Mermaid* in 2017. Chris is a two-time Ovation Award Winning actor, two-time Jessie Award Winning producer, and a two-time Jessie Award nominated director. As an actor, he toured Canada for a year in *The Number 14*, starred as Charlie Brown in *You're a Good Man, Charlie Brown* at the Globe Theatre, and originated the role of the Pied Piper in Axis Theatre's original musical *Hamelin*. He is the Co-Managing Artistic Director of Raincity Theatre; up next he directs Jason Robert Brown's *Parade*.

DAKOTA HUTCHINS (he/him)

Ensemble / Gaston Understudy

Dakota is thrilled to be making his debut appearance with Align! Dakota graduated from Capilano University's Musical Theatre program in 2022.

Some of his previous credits include Ensemble in *Out of This World (APPLAUSE!)*, Pete in *Crazy for You* (Royal City Musical Theatre), Senator Fipp in *Urinetown* (CapU Theatre) and Schroeder in *You're A Good Man Charlie Brown* (CapU Studios).



ELENA BANARES (she/her)

Chip

Elena has been dancing ballet since she was three years old and has taken some tap, jazz, contemporary, acro and musical theatre along the way. Her first dance recital was at the age of three, and she has maintained her passion for performing ever since. Her first music lesson started at six months old and continues to this day. This is her Align debut but select credits include *The Sound of Music* (Arts Club Theatre); *The Nutcracker* (Goh Ballet); *The Nutcracker* (Royal City Youth Ballet). Elena wants to thank Align Entertainment's creative team for this fantastic opportunity to play the role of Chip. Special thanks to all her teachers, friends, and especially her family for all the love and support. Enjoy the show!

CAST

ELISABETH POLLOCK (she/her)

Ensemble / Les Filles Understudy

Elisabeth is excited to be taking part in her first Align Show as part of the cast! In past years, Elisabeth has participated in Align shows as a stagehand for Annie, and Shrek the Musical. Select theatre credits include Lumiere, Beauty and the Beast; Tanya, Mamma Mia (Lindbjerg Academy) and Mrs. Tottendale, The Drowsy Chaperone (Rivers Edge theater). She hopes you enjoy the show!



ELLIETTE LATIMER (she/her)

Kids Ensemble

Elliette is so thrilled to be a part of this production of Beauty and the Beast! Ellie adores musical theatre and has been performing ever since she was 4 years old. Some of her favourite shows include Elf Jr., Annie, and Seussical. Ellie also loves all styles of dance and can be found at her studio most days of the week. She is passionate about volunteering for the younger dance and theatre classes and enjoys acting and training for film and tv. Elliette would like to thank her family, especially her little sister Charlie and all of her dance and theatre teachers. She hopes you enjoy the show!

EMMATCHETTE (they/he/she)

Lefou

Em could not be more excited to be a part of Beauty and the Beast. They are a graduate of the Musical Theatre program at Capilano University, and the Bachelor of Performing Arts Program at Douglas College. Passionate about youth theatre and creating an open and safe rehearsal space, they are a musical theatre instructor at the Lindbjerg



Academy of Performing Arts and Showstoppers Academy of Performing Arts. Select performing credits include: Gertrude McFuzz in Seussical the Musical (Align Entertainment), Ensemble in Mamma Mia (Arts Club Theatre Company), Millie Dillmount in Thoroughly Modern Millie (Exit 22), and Lou Ann in Hairspray (Theatre Under The Stars).

CAST



EMMA DOTTO (she/her)

Ensemble / Madame Understudy

Emma is thrilled to be making her Align Entertainment debut this winter. When she isn't at rehearsal, she is a K-5 music teacher.

Theatre credits include Mary Poppins (Theatre Under the Stars), and Kismet in Concert (Royal City Musical Theatre).

SPENCER SWIFT (he/they)

Monsieur D'arque / Ensemble / Beast Understudy

Spencer Swift is incredibly excited to be a part of Beauty and the Beast. This is their first show with Align entertainment, and their first show since

Graduating from Capilano University's Musical Theatre department.

Spencer wants to thank his family for supporting him and always being

there to lend an ear.



COMING SUMMER 2024!

CATS

SCHOOL OF
ROCK

TICKETS ON SALE APRIL 2024

CAST



GEORGIA ORCHARD (she/her)

Narrator / Kids Ensemble / Chip Understudy

Georgia Orchard has been a student at Lindbjerg Academy for four years with classes in jazz, acro, lyrical, glee choir, and musical theatre. Georgia has most recently played Ariel in *The Little Mermaid*, and performed in *Matilda*, *Peter Pan*, *Dear Edwina*, *Guys and Dolls*, and *Frozen*. When she isn't singing and dancing, she loves acting for film & TV and has had roles in Hallmark's "My Christmas Family Tree" and commercials including Olay and Xfinity. She has also trained with Tricity Studios and LeBlanc School of Acting.

GRAYSON BESWORTH (he/him)

Kids Ensemble

Grayson has been singing and dancing his whole life. Grayson loves to be on stage and was proud to be in the recent production *Wizard of Oz* by CTORA and the amazing summer production of Roald Dahl's *Matilda* with TUTS. He also belongs to the amazing Lindbjerg Academy of Performing Arts. Some credits are: *Cat in the Hat* in *Seussical Jr.*, *BullFrog* in *Honk! Jr.*,



Winthrop in *The Music Man* and more! Grayson does four different types of dance: Jazz, Ballet, Tap and Lyrical. When not on stage, he is making musicals with his friends and creating Lego stop motion films. He would like to thank Mr. Chad for this opportunity to be in his first Align production. Now, be our guest and enjoy the show!



HAZEL KALDESTAD (she/her)

Kids Ensemble

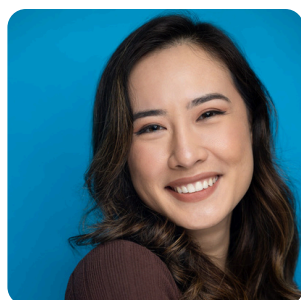
Hazel is thrilled to be making her Align debut in *Beauty and the Beast*! Hazel has been in love with musical theatre ever since joining Lindbjerg Academy in 2019, when she was cast as Wendy in *Peter Pan Jr.* Subsequent roles in junior productions at Lindbjerg include Dorothy (*The Wizard of Oz*), Jovie (*Elf the Musical*), Sarah Brown (*Guys and Dolls*), Middle Anna/Ensemble (*Frozen*), Sebastian (*The Little Mermaid*), and Rudolpho/Ensemble (*Matilda the Musical*). Hazel is in 8th grade at Moody Middle in Port Moody. She studies voice, musical theatre, tap, jazz, ballet, and competition classes. She thanks her family and all her teachers at Lindbjerg for their love and support, and Align for this opportunity. Enjoy the show!

CAST

JACOB WOIKE (he/they/she)

Beast

Jacob is so inspired to take part in telling this story about the transformative power of love. Select credits: Ghost: The Musical (Chemainus Theatre), Les Misérables (Arts Club), Lead Vocalist (Royal Caribbean Cruise Lines), Vimy (Western Canada Theatre), Pure '90s (Stage West Theatre), A Little Night Music (Patrick Street Productions). Film credits: Woman of the Hour (Vertigo Films; Anna Kendrick). Thank you to Chad and the whole team at Align. All my love to my wonderful family, Hod, and always to Melissa and Shannon.



JESSICA WONG

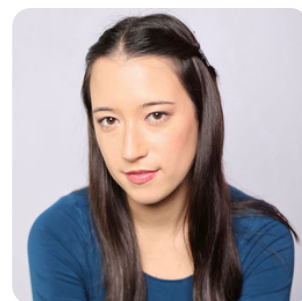
Enchantress / Ensemble / Belle Understudy

Jessica is an emerging theatre performer, producer and voice actor living on the traditional, ancestral and stolen territory of the həŋqəmihəm-speaking peoples. Some recent acting highlights include - Curtains (Applause), Before They Cut Down Our Tree (Vancouver Fringe Festival), The Prom (TUTS), The Treadmill (Ignite Festival), 30 Neo-Futurist Plays (Bramble Theatre) and Light Rapid Transit (Coffeehouse Theatre). When not acting, she also works as a co-founder of Bramble Theatre Collective (@brambletheatreco). Through Bramble, she is passionately working towards nurturing a love of theatre for artists who, like herself, may have struggled to find their place and hopes to invite a more diverse range of artists to join the theatre world.

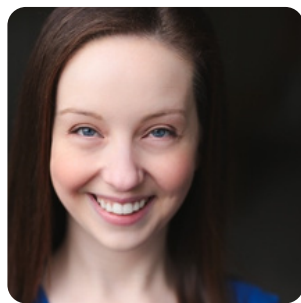
JOCELYN TSUI (she/her)

Les Filles De La Ville / Dance & Fight Captain

Jocelyn has had the pleasure of performing in three Align productions - Seussical, The Little Mermaid, and Shrek in 2014 - and she is thrilled to return with one of her dream shows! Other performing credits include Joseph and the Amazing Technicolour Dreamcoat (Gateway Theatre) and Cinderella (Theatre Under the Stars). In 2020, Jocelyn co-founded The Parallel Project, a writing workshop that commissions original monologues written by and for IBPOC artists. Since then, she has produced the MSG Lab with vAct (Vancouver Asian Canadian Theatre), and she now works as the producer at the Arts Club. She holds a Diploma of Musical Theatre from Capilano University and will graduate from SFU with a Bachelor of Arts in the spring. Thanks as always to her family and the creative team for their support!



CAST



KIM BUNKA (she/her)

Ensemble

Kim is thrilled to be in her second Align show after playing Mrs. Mayor Who in Seussical last year. She has been performing in theatre for over 25 years with favourite credits including Jen in John and Jen (Undiscovered Theatre), Connie Lane in Good News (Grant MacEwan), and Anne in Anne of Green Gables (Footlight Theatre - CTC Award of Merit). Kim also worked for Disney Cruise Line for eight years as both a performer and stage manager and enjoyed bringing magical memories to guests of all ages. She had a Beauty and the Beast themed bedroom as a child so as you can imagine she's ecstatic to be telling this tale as old as time! Kim thanks the entire Beauty and the Beast team for all their hard work as well as her dad and brother for their support. She knows her mom is watching from the best seat in the house!

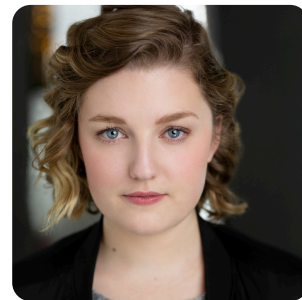
LEAH NEWSON (she/her)

Ensemble / Babette Understudy

Leah is a graduate of Capilano University's Musical Theatre

Program and she is delighted to be back with Align for her

sixth show! Select onstage credits include: Lily St. Regis in Annie (Align Entertainment), Kate / Dance Captain in Legally Blonde (Align Entertainment), Miss Smythe / Ensemble / Dance Captain in Mary Poppins (TUTS), Fraulein Kost in Cabaret (Exit 22). Leah would like to thank the entire production team and cast for their hard work and dedication, and her family for their love and support. Enjoy the show!



CAST



LUCAS GREGORY (he/him)

Young Prince / Ensemble / Wolf / Swing

Since sticking his tongue to a lamp post in Align's memorable production of *A Christmas Story*, Lucas has been busy acting, singing and dancing his way through Vancouver's musical theatre scene. Roles include Troy Bolton (*High School Musical*), Harold Hill (*The Music Man*), The Huntsman (*Snow White*) and most recently in last summer's *Theatre Under The Stars* fabulous production of *Matilda*. Lucas lives the North Shore life but was born in Essex, England. His big ambition remains to tread the boards of London's West End.

@lucasvictorgregory

LULU HUGHES (she/her)

Ensemble / Wolf

Lulu is thrilled to be back on the Align stage for her third show, after being in *Shrek 2014* and *Seussical*. She has been training and performing with Lindbjerg Academy for the past 13 years and is a grade 12 student at Dr. Charles Best Secondary. Past credits include Marcellus in *The Music Man* (Lindbjerg Academy), *Charlie Brown In*



You're A Good Man Charlie Brown (Best Players), and *Lemur/Who* in *Seussical* (Align Entertainment). She would like to thank the cast and production team for all their hard work and she hopes you enjoy the show!



MATTHEW VALINHO

Lumiere

Matthew is delighted to be performing with Align Entertainment. Previous credits include Trent Oliver in *The Prom*, for which he received the E.V. Young Award for Outstanding Performance, and Ensemble in *We Will Rock You* (*Theatre Under the Stars*). He has recently trained with the Railtown Actors Studio in Vancouver, Flight Club Artistic Movement in Richmond, and the world-renowned musical theatre program at the UBC Sauder School of Business – where he is completing his fourth year of studies in the BCom program. He thanks his mom and dad for supporting him in all his crazy endeavours, and the Align team for welcoming him with open arms.

CAST

MORGAN COLLINS (he/him)

Ensemble / Gargoyle / Cogsworth Understudy

Morgan is thrilled to return to the stage in his fifth production with Align Entertainment as a member of the Ensemble in *Beauty & the Beast*. Previous credits include *Seussical*, *Shrek*, *Annie & A Christmas Story: The Musical (Align)*, *Romeo & Juliet & Peter Pan (Western Canada Theatre)*; *The Laramie Project (GALA Kamloops)*; *Charley's Aunt (Stage Polaris)*; *The Tempest*, *Glengarry Glen Ross*, *Escape From Happiness & The Birds Stopped Singing (UVic)*. He can also be heard as the voice of Falstaff in the *Legends: A Superhero Story* podcast. Morgan would like to thank Chad, Patti, Kevin, Melissa, Sara and the rest of the cast & crew of *Beauty & the Beast* for this experience. He also wants to thank his family, especially the love of his life, his wife Robin, & their four kids, Vada, Dylan, River & Shane for their love & inspiration.



OWEN CB SCOTT (he/they)

Ensemble / Wolf

Owen is beyond thrilled to have joined the cast of *Beauty and the Beast*. Owen is 16 years old and is an actor, singer, dancer, and musician based out of his hometown of Vancouver, BC. Owen made his professional debut back in 2016 as a Young Boy in *Fiddler on the Roof (RCMT)*. Since then, he has been fortunate enough to perform in an abundance of productions in the Lower Mainland. Such as *Anne Of Green Gables (Gateway)*, *Matilda (Arts Club)*, *The Wizard Of Oz (CTORA)*, and more. Owen is also an Ovation Award nominee for "Best Newcomer". Owen currently trains at the Lindbjerg Academy of Performing Arts, with 11 years experience in tap and hiphop. Owen cannot thank the entire team enough for all of their hard work, dedication, and kindness. Enjoy the show! @owencbscott

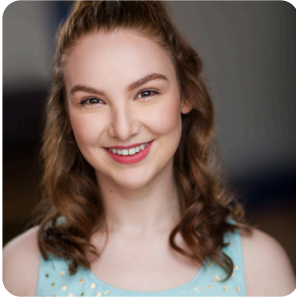
PAULA HIGGINS (she/her)

Belle

Paula is elated to be making her Align debut as Belle in *Beauty and the Beast*. A graduate of Vancouver Film School and the Canadian College of Performing Arts, Paula spent this past summer at Theatre Under The Stars where she played Miss Honey in *Matilda the Musical*. Other credits include Max in *Triangle Factory Fire Project (CCPA)* and Ensemble in *Mary Poppins (CCPA)*. Enjoy the show!



CAST



RACHEL SCHEIBEL (she/her)

Babette

Rachel couldn't be happier to be returning to the Align stage, in feathers no less, after previously appearing as a Bird Girl in *Seussical the Musical* and *The Ugly Duckling* in *Shrek the Musical*. Rachel is a graduate of Capilano University's Musical Theatre Program. Other past credits include Margaret in *9 to 5* (CapU Theatre) and Diane in *42nd Street* (TUTS).

Rachel would like to thank Chad, Melissa, and Kevin for this magical opportunity!

ROBIN SUKOROKOFF

Ensemble / Gargoyle

Robin is grateful and excited to be part of the latest production from Align Entertainment. He has had the pleasure of being part of ALL the shows to date, and thankful to have made it into this wildly popular show! One of the final Two. Thank you for supporting live theatre.



ROYAL CITY
MUSICAL
THEATRE
presents

APRIL 25 - MAY 12

Disney and CAMERON MACKINTOSH'S



MARY POPPINS

THE BROADWAY MUSICAL

©Disney/CML

BUY
TICKETS
FROM \$27

royalcitymusicaltheatre.com

ROYAL CITY
MUSICAL THEATRE
established 1989

CAST



RYAN NUÑEZ (he/him)

Ensemble

Ryan is a proud queer actor, currently residing and working in Vancouver on unceded Coast Salish territory - he is grateful to be a guest on these lands. He is the founder of Broad-WHAT? podcast, co-founder of Play on Words Productions theatre company, and a graduate of Capilano University's Musical Theatre program. This is Ryan's fourth production with Align, appearing in Chitty Chitty Bang Bang, and Joseph and the Technicolor Dreamcoat X 2. Ryan is so pleased to return to the Align family. broadwhatpodcast.com @ryannunezz

SHERYL ANNE WHEATON (she/her)

Mrs. Potts

From musical theatre to children's theatre, from dinner theatre to film and television, Sheryl Anne has been a part of the entertainment industry for well over 30 years, performing, impersonating, choreographing, directing, and teaching. Sheryl Anne has worked in a number of theatre houses throughout Vancouver including Theatre Under The Stars, The Jericho Arts Centre, The Nest on Granville Island as well as the Metro Theatre. Favorite roles to date include; Sister Robert Anne in Nunsense; Mrs. Coltrane in Thursday Night Bridge Circle, Truvy in Steel Magnolias, Rosie in Mama Mia, Mrs. Potts in Beauty and The Beast and Mrs. Tottendale in The Drowsy Chaperone. This will be Sheryl's first production with Align and she is excited to be working with such an amazing company.



SIMON ABRAHAM (he/him)

Ensemble / Wolf / Lefou Understudy

Simon is excited to be a part of Align Entertainment's production of Beauty and the Beast. Simon is a graduate of Capilano University's Musical Theatre program. Past credits include Mingo in Crazy For You (RCMT), Wickersham #1 in Seussical (Align), Francis Flute/Shylock understudy in Something Rotten (TUTS), Baker/Ensemble in Joseph... (Gateway Theatre), and Detective/Ensemble in 9 to 5 (CapU Theatre). Simon would like to thank the creative team, Chad, Kevin and Melissa, for the amazing opportunity, and the cast and crew for a great time.

CAST

SOPHIA GHARBI (she/her)

Kids Ensemble

Sophia is absolutely thrilled to be part of her first Align Entertainment production. She plans to draw on her experiences training and performing with Lindbjerg Academy for the last five years; including her roles as Bruce (Matilda), Ursula (The Little Mermaid) and Nathan Detroit (Guys and Dolls). Sophia is also an accomplished athlete who enjoys quarterbacking her Div. 1 community soccer team as their goalie and being a runner in lacrosse. Sophia is excited to work with this amazing BATB cast and crew and she hopes you enjoy this tale as old as time!



SOPHIA POLLOCK (she/her)

Ensemble

This is Sophia's first show on stage with Align Entertainment! Sophia trained at Lindbjerg Academy in singing, dancing, and acting for 10 years. Some select credits include Ensemble/ Judy Understudy (White Christmas, TIC), Belle (Beauty and the Beast, Lindbjerg), Sophie (Mamma Mia, Lindbjerg) and Janet (Drowsy Chaperone, RiversEdge). She also recently completed a summer program with the Stella Adler Studio of Acting and participated in the Musical Theatre Intensive with Arts Club. She would like to thank the entire creative team and her cast for making this experience so special. Finally, she would like to thank her parents for being her biggest supporters and signing her up for theatre in the first place.



CAST

STEVE DOTTO (he/him)

Maurice

Steve began his love of the theatre in High School under the tutelage of the legendary Grace McDonald. Best known as host and executive producer of Dotto Tech, a nationally syndicated TV show, Steve entertained and educated millions of Canadians on all aspects of technology. A misspent youth saw Steve spending most of his spare time on stage somewhere in the Lower Mainland, from the Metro Theatre, to Richmond Gateway, and Dunbar Musical Theatre and TUTS where over 40 years spanned his first and last shows, West Side Story in 1977, and Mary Poppins in 2018. This is Steve's first show with Align, which is long overdue.



STUART BARKLEY (he/him)

Gaston

Thank you for supporting local theatre! We the performers, crew, directors & many more could not be doing this without you being here. Thank you family for your years of support - but I still don't want to sing at Christmas!

THOMAS SCHULTES (he/him)

Ensemble / D'arque Understudy

Thomas couldn't be happier to be coming back for his second show with Align Entertainment after last year's production of Seussical the Musical. A recent graduate of Capilano University's Musical Theatre program, Thomas's past credits include The Escapologist in Matilda (TUTS), Bobby Strong in Urinetown (CapU) and Custus in Crazy for You (RCMT). He would like to thank the whole cast and creative team for having him back for another amazing year, and he hopes you enjoy the show!



ORCHESTRA



ALICE HU (she/her)

Reed 1

Alice is delighted to be a part of the orchestra once again for Beauty and the Beast. She has previously played flute and piccolo for Oliver! (TUTS 2015) and Beauty and the Beast (TUTS 2016). Alice is a graduate of the Music program at the University of British Columbia, and an elementary music educator in SD35.

Christopher Qiu

Bass

Christopher Qiu is a Burnaby born high-school student in grade 11. He loves music in all different ways and enjoys all opportunities involving music.

Starting from a hobby, it has expanded into leading his own band group in school and doing work for others in a variety of different events. Christopher hopes to continue this hobby and be able to expand his horizons.



DANIEL FORTIN

Percussion

Growing up in Chilliwack, BC, Daniel started to play drums at the age of 5.

After high school Daniel made a decision to pursue engineering and design, although his passion

for music has never left. When he is not playing music, Daniel enjoys building drums, guitars and other percussion equipment, fulfilling his two passions of music and design. He lives in New Westminster with his lovely wife Stefanie.



ORCHESTRA

JENNIFER INNANEN (she/her)

Reed 3

Jennifer, a Vancouver-based reed musician, boasts 15 years of playing Musical Theatre. She holds a degree from Kwantlen Polytechnic University for Clarinet and has performed with TUTS, RCMT, Capilano U. and is excited to be back for her seventh performance with Align Entertainment.

“If it’s not Baroque, don’t fix it!”



KEVIN MCDONNELL

Violin

Kevin is excited to be returning to Align Entertainment’s Orchestra, having previously played in the Shrek (2020) Orchestra. Kevin is classically trained and has performed with various orchestras and chamber music groups. Previous musical theatre productions include Crazy For You (RCMT), Joseph and the Amazing Technicolor Dreamcoat (Gateway Theatre and RCMT), Legally Blonde (Theatre Under The Stars), Cinderella (Capilano University), Westside Story (RCMT), Cabaret (RCMT), and Annie (RCMT).

LIA WOLFE (she/her)

Keyboard 1

Lia is excited for the opportunity to work with the Align family again, especially on this iconic show. She holds three music degrees, and has a wide variety of experience as an actor, singer, pit musician, rehearsal pianist, vocal coach, wedding and service musician, music director and co-director. She has worked with Royal City Musical Theatre, Applause!, Align



Entertainment, Theatre Under the Stars, Surrey Little Theatre and Raincity Theatre. Lia is a retired music and drama teacher. She has had the privilege of teaching all ages from preschool to adult, in private studios and in public and private schools. Currently she performs regularly with Pacific Mist jazz trio, Jubilate Vocal Ensemble, and Caminando Carolers. She also does movie extra work - usually as “caroler 2” :) She lives in Vancouver with her very patient and supportive husband, Del. They have three grown sons and one grown daughter, plus their partners, six grand-furbabies, and one lovely little granddaughter.

ORCHESTRA



LINDSAY GOLDBERG

Trumpet

Lindsay is so honoured to be back performing in the pit for his third Align musical! Earlier Align shows: Seussical the Musical (2023) and A Christmas Story (2018). Non Align productions: Matilda, Something Rotten!, Newsies, 9 to 5, 42nd Street, Drowsy Chaperone, From Broadway with Love, Merrily We Roll Along, A Chorus Line, Grease and Hairspray. Lindsay is proudly dedicating his performance in Beauty to his late mother-in-law, Shirley Caine, herself a “Beauty” in every sense and remembered always as the exception to the unfortunate stereotype. Biggest “Thank You” to wife Marnie, Lindsay’s biggest fan!

MALCOLM FRANCIS

French Horn

Research has shown many health benefits to performing (and listening) to music. Malcolm credits his good health and sparkling personality to his music career. Over the period of more than 27 years he has been fortunate enough to have worked with Align Entertainment, Royal City Musical Theatre (RCMT), Theatre Under the Stars, New Westminster Symphony and Richmond Orchestra. He is also a member of the Vancouver Men’s Chorus. Performing in musical theatre is his passion and he’s delighted to be playing French Horn for Align Entertainment’s “Beauty & the Beast”. His next performance will be in RCMT’s production of “Mary Poppins”.



MARIA ROSSOUW (she/her)

Cello

Maria Rossouw is a recent graduate from the University of British Columbia where she studied Psychology. While aiming for graduate school in Counselling Psychology she spends her time working in a childcare facility, volunteering in crisis response with Kids Help Phone, and playing cello in her free time. She has been playing cello for ten years. In this time she has performed in the BC Honours String Orchestra in Vancouver and the Musicfest Canada National Honours String Orchestra in Toronto and Niagara Falls. She has also been a part of the orchestra for musicals including The Addams Family, Crazy For You, and West Side Story.

ORCHESTRA

MONICA

Alternate Bass



Monica is excited to be returning to Align to play in her seventh production with the company! Monica is a Vancouver-based bassist who graduated from Capilano University receiving a Bachelor's Degree in Jazz Studies majoring in Music Education. Versatile in different styles, she spends most of her time freelancing to local musical theatre companies performing in almost 40 productions in the last 6 years. Her most recent involvements have been with Arts Club (Little Shop of Horrors), Theatre Under the Stars (Matilda & The Prom) and CTORA (The Lightning Thief: The Percy Jackson Musical).



PETER ABANDO (he/him)

Keyboard 2

When he's not teaching K-7 music in West Van, you can find Peter composing, improvising, directing, or performing music somewhere around Metro Vancouver. Select music direction credits includes Spring Awakening (Phantom Moon Collective, 2017), Dogfight (Semper Fi Collective, 2016), the Jessie nominated production of Edges (Two Monkeys Production, 2015), the Ovation nominated Connected: The Musical (Whirlwind Theatre, 2013), and an adorable workshop of [title of show]. More recent productions include a special charity concert of Dear Evan Hansen with Laughing Matters Theatre, 9 to 5: The Musical at Capilano University, and the Ovation nominated 2019 Vancouver Fringe hit, Amélie, with West Moon Theatre. You can find him regularly conspiring with Jennifer Pielak, Chris Lam, and Nicole Roberge.

TEIGAN PAISH (she/her)

Reed 2

Teigan is excited to be playing her first show the Align Entertainment! Although, this isn't her first time playing the timeless music of Beauty and the Beast. She performed with TUTS in 2016 and couldn't be happier to be playing again! Teigan is a Jr. School music teacher at St. George's School and when she is not busy making music she is enjoying time with her son Percy and husband Alexei.



PRODUCTION TEAM



ABIGAIL BESWORTH (she/her)

Backstage Assistant

Abigail has been a part of the Lindbjerg Academy of Performing Arts family for the past 4 years. She loves all aspects of Theatre; from being on stage, to tech week to all the costumes and sets! Theatre has given Abigail many meaningful friendships and has found her 'home'. Abigail is excited for this opportunity to learn more behind the scenes of a theatre production and is grateful to Align Entertainment for letting her be part of this show. Enjoy the magic of the Beauty and the Beast.

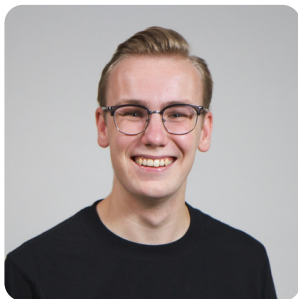
ALEX HOUSE (he/him)

Technical Director

For the last 11 years Alex has worked as a Technician and Technical Director for various venues and theatre companies across the lower mainland and now works primarily as a theatre consultant. This is Alex's second show with align and is thankful for the opportunity to work with the entire production team as he values their individual dedication to



bringing stories to the stage. Alex wants to thank his wife Melissa for always being supportive in every way.



BEN PAUL (he/him)

Lighting Operator

Ben Paul is a lighting designer, stage manager and theatre technician from New Westminster, BC. He is

thrilled to join Align Entertainment this season as the head electrician and lighting board operator. Recent lighting design credits: Gertrude and Alice (United Players) and Shrek (School's Out Productions). Recent stage management credits: The Nutcracker (Royal City Youth Ballet) and The Festivities (UBC Theatre). Ben holds a Bachelor of Fine Arts in Theatre Design & Production from The University of British Columbia and a Diploma in Stagecraft & Event Technology from Douglas College. Please find Ben's portfolio and resume on his website - benpaul.ca.



PRODUCTION TEAM

BRAD TRENAMAN (he/him)

Lighting Designer

Brad is happy to be returning to Align after lighting Seussical last year and he's especially excited to put his own spin on Beauty and the Beast after having worked as an assistant on the Canadian premiere in Toronto (1995). Prior to moving to North Vancouver, Brad worked with many of Toronto's leading dance companies and choreographers including Ballet Creole, Menaka Thakkar, Chimera Project and Shawn Byfield. Currently, Brad is the Technical Director and Resident Lighting Designer for Presentation House Theatre where he's lit their hugely popular productions of Where The Wild Things Are and Baking Time, among many others. Other recent West Coast credits include Always...Patsy Cline (Theatre Northwest), Take Form (Ballet BC), Salmon Girl (Jessie Award - Raven Spirit Dance / Carousel), Redpatch (Jessie Nomination - Hardline Productions / Arts Club), White Noise (Savage Society / Firehall Arts Centre) and Black and Rural (Pi Theatre). Toronto: Shakespeare in High Park (Canstage), CATS (NuMu Productions) and i think i can (YPT). Las Vegas: Matt Dusk (Hilton residency) and Menopause the Musical (Luxor). Touring: The Stepcrew, magician Ted Outerbridge, National Chinese Acrobats. Brad is a freelance writer for Professional Lighting and Production Magazine with over 20 features published, a member of Associated Designers of Canada (ADC IATSE 659) and also the President of New Works, a Vancouver based dance support organization which will celebrate its 30th anniversary next year. www.batlighting.com



CHAD MATCHETTE (he/him)

Director / Co-Producer

Chad has been involved in the Vancouver theatre scene as an actor, director, producer, writer and teacher for over 35 years. He has worked with many companies such as RCMT, TUTS, and Footlight. He is the co-owner and Artistic Director of Align Entertainment, which has produced Shrek, The Addams Family, Chitty Chitty Bang Bang, Joseph and the Amazing Technicolor Dreamcoat, The Little Mermaid, Legally Blonde, A Christmas Story: The Musical, Annie, and Seussical. Chad is also the Artistic Director and co-owner (with his wife Erin) of the Lindbjerg Academy of Performing Arts and Showstoppers Academy of Performing Arts where he is living a lifelong dream of not only working in the arts but also teaching and helping encourage young people to express themselves and find their voice through musical theatre and dance. He hopes you enjoy the show!

PRODUCTION TEAM



CHRIS FREDERICKSON (he/him)

Follow Spot Operator

Chris is delighted to be back with Align Entertainment, this time lighting up the stage as a full-time follow-spot operator. After a decade in design, he's found a new home in theatre, excited to blend his technical savvy with the creative energy of this vibrant production. Here's to another season of spotlight magic and storytelling!

DAN WEIEBE (he/him)

Assitant Stage Manager / Carpenter

Dan has been involved in musical theatre for the past 15 years. It all started with Lindbjerg Academy where his children joined, and fell in love with singing, dancing and acting. Over the years, and through the help of talented individuals, he has learn the trade of set building and design, and Assistant Stage Management. Past shows include, Align's 'Little Mermaid', 'Joseph', 'Legally Blonde, 'Shrek' ' and 'A Christmas Story' as ASM, 'Legally Blonde' 'Shrek' and 'A Christmas Story' as set construction, numerous Lindbjerg Academy productions as Set Design and ASM, Naked Goddess Productions "The Best Christmas Pageant Ever", Bring on Tomorrows 'Fame' and '13', and Snapshot Collective's 'Sweeney Todd'. Bring on the show!



DANIEL MONAGHAN (he/they)

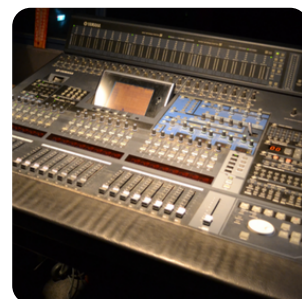
Follow Spot Operator

This is Daniel's 3rd show with Align. Daniel has performed on stage in Tarzan as well as worked backstage. They enjoy the follow spot role even though perched way above the audience. Despite his 6 ft 9 inch physique, Daniel is not a fan of heights. Enjoy the show.

DAVE MCRAE (he/him)

Production Crew

Dave, now retired from the Michael J Fox Theatre, has been involved in every Align Entertainment production since the very beginning. Dave is now happy to continue being a part of the Align Family in a variety of roles backstage.



PRODUCTION TEAM



EM LOHNES (they/them)

Assistant Stage Manager / Props Manager

Em is back at it again! They have worked on five other Align shows in the past and are excited to be putting their prop making skills to new and bizarre uses. When not working backstage or building everything but the kitchen sink (literally), Em can be found building other fantastical creations as a seamstress and professional cosplayer!

ETHAN KNOLL (he/him)

Michael J Fox Theatre Technician

Round 5! Coming back for their fifth show with Align Entertainment, they have spent almost their entire life in the theatre, performing in shows at a young age, before moving onto and becoming a theatre technician on Granville Island and with local community theatres. There is something magical that happens in live performance, and they love any chance to be



part of making that happen. Having last year been a follow-spot operator, they are excited to return to their roots of stage management, assisting the backstage team with any and everything!



HANNAH LOHNES (she/they)

Backstage Assistant

Round 5! Coming back for their fifth show with Align Entertainment, they have spent almost their entire life in the theatre, performing in shows at a young age, before moving onto and becoming a theatre technician on Granville Island and with local community theatres. There is something magical that happens in live performance, and they love any chance to be part of making that happen. Having last year been a follow-spot operator, they are excited to return to their roots of stage management, assisting the backstage team with any and everything!

PRODUCTION TEAM

IAN BALLARD (he/him)

Hair / Makeup

Ian Ballard is a professional hair stylist who has worked on stage, film and tv productions as a Head of Dept for over 30 years. He is a master of wigs and period hairstyles and we are fortunate to have him working and sharing his art with us. Ian has been nominated for Emmys on various productions throughout his career and now is happy to mainly work on the wigs and creative styles to help make the stage come alive. Hope you enjoy the show.



JAN BALLARD (she/her)

Hair / Makeup

Jan Ballard is a professional makeup/hair artist who specializes in special effects and airbrushing. When she is not on set Jan partners with her husband, Ian Ballard who also is a professional hair stylist and they together share their art with the theatre community. There they design, supply, create and apply the looks for theatre productions throughout the city. Some of their favourites include "The Addams Family", Shrek", "Bat Boy", and "The Full Monty" for production companies including Align, TUTS and Patrick St. Prod. Jan also loves being backstage with all her theatre family for the Lindbjerg shows and can often be seen loading in and out or driving a Uhaul around town. Hope you enjoy the show.



PRODUCTION TEAM

JAYDA GRANT (she/her)

Assistant Music Director

Jayda is excited to be a part of her first show with Align Entertainment.

She started performing at the age of 5 as Tinkerbell in Peter Pan (Lindbjerg Academy), and more recently playing Rosie in Mamma Mia (Broadway Dance) and Man in Chair in The Drowsy Chaperone (River's Edge Theatre). Over the years, Jayda has been involved with the on stage,

backstage, and lighting aspects of theatre, but has now found her passion as a music director.

She was the assistant music director and orchestra pianist for The Rocky Horror Show (Delta Players), music directed Little Women and Freaky Friday (River's Edge Theatre) and is currently music directing Spring Awakening (Delta Players). Jayda is thankful to be a part of the team,

and hopes you enjoy the show!



JOHN BRADBURY (he/him)

Carpenter

Learning to build with his grandfather as a child resulted in over 20 years of set design and carpentry for John. In addition to Align Entertainment, he has enjoyed building for Lindbjerg Academy, Boone Dog Productions and Rain City Theatre just to mention a few. Select list of building projects include The Little Mermaid, Lion King, Tarzan and Peter Pan. John is ecstatic to be part of the Align Family for the past 13 years or since Shrek The Musical (1). Please enjoy the show!

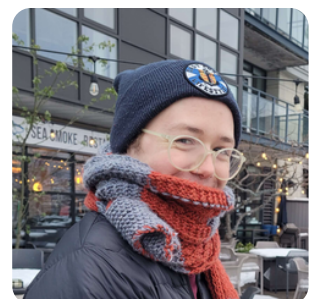
JORDAN CHAMBERS (he/him)

Costumer / Head of Wardrobe

A graduate of Dalhousie University's Costume Studies program, Jordan is thrilled to be joining Align for this production! He has previously worked with Theatre Under the Stars (The Prom, Newsies), Royal City Musical Theatre (Crazy For You!), and the Fountain School of Performing Arts (The Crucible, A Northern Lights Dream, People Places and Things) in roles from

Dresser and Head of Wardrobe to Cutter and Stitcher. Beauty and the Beast is the first show he's designed for since highschool and he is excited to bring some new skills to the challenge.

Enjoy the show!



PRODUCTION TEAM



JORDAN STASUK (he/him)

Set Design / Lead Painter

This is my 4th production with Align, having already painted sets for A Christmas Story, Shrek & Seussical. Very pleased that this year we're doing Beauty & The Beast! Much thanks goes out to our A-Team Construction Crew, they hand me things & I paint 'em. We are an efficient machine.

Also, thanks to the Disney artists & animators who slaved away on the animated version, your work has paved the path for the most glorious version of Beauty & The Beast ever produced, here tonight. Enjoy.

KELSEY TIERNEY (she/her)

Costume Assistant

Kelsey is so excited to be involved with her first Align production! Kelsey has been involved with musical theatre her whole life—primarily performing—however has also developed a love of back stage work and costuming. After spending her childhood singing and taking musical theatre classes, Kelsey continues to share her love of theatre, working



with children at both Showstoppers Academy and Lindbjerg Academy as a teacher and as a member of the costume team. Kelsey would like to thank Chad, Patti, Sara, and the rest of the creative team for the opportunity to be a part of this incredible show and community. She would also like to thank Jordan for being such an amazing head of wardrobe to work for; thank you for your support, encouragement, and laughs.



KENNETH MACDONALD (he/him)

Sound Designer

This is Ken's first year with Align and when he was asked to come in as sound designer he thought that sounded like fun. He hopes you enjoy every note!

PRODUCTION TEAM

KEVIN WOO (he/him)

Music Director

Kevin has been involved with the Vancouver & Lower Mainland musical theatre community for over 30 years. An accomplished reed musician, he studied clarinet at UBC's School of Music and has played in orchestra pits for companies such as RCMT, TUTS, Gateway Theatre, and more. As a Music Director, Kevin has been fortunate enough to work on Annie and



Shrek The Musical with Align Entertainment, Cabaret with Raincity Theatre and a personal project/fundraiser producing a one night performance of Lin Manuel Miranda's 21 Chump Street. When not under the stage or in a 'pit', Kevin can be found in Stanley Park, where he works as the General Manager for Theatre Under the Stars, an organization he has been involved with since 1994, starting as a pit musician. Throughout the years, Kevin has enjoyed watching artists excel and develop while taking in the camaraderie and encouragement that the Vancouver theatre community fosters.



MELISSA TURPIN (she/her)

Choreographer

Melissa was a member of the original creative team for Align and is excited to be back for her tenth production. A graduate of both Capilano and SFU, she trained in theatre performance to obtain her Bachelor of Fine Arts degree. Favourite performance credits include: Mrs. Claus' Kitchen (Famous Artists), Will Rogers Follies & Oklahoma (RCMT) and Legally Blonde & Grease (TUTS). Melissa has also been a theatre and dance educator for over 15 years. Many thanks to her family for their constant support.

PATTI VOLK (she/her)

Co-Producer / Production Manager

Patti is excited to have spent the last 11 years co-Producing shows with the gang at Align Entertainment but the time has come to step away. There needs to be more time spent with family, travelling and enjoying great food. It's been a blast however there's a delicate balance between work and play. A heartfelt thank you to all the people I've worked with,



members of the Directing Teams, designers, casts, crews, orchestras' and of course the patrons who come to see our shows. Thanks as always to Horst, Erik, Adam, Tasha and little Ben! I sincerely hope you all enjoy the show and continue to support Align Entertainment in future shows, I know I will!

PRODUCTION TEAM



SARA LOHNES (she/her)

Co-Producer / Stage Manager

Sara is thrilled to be back for her seventh production with Align, as both stage manager and now co-producer. Her previous experience in theatre includes costumes, props, sets, acting, lighting and sound design, producing, and stage management with Xtreme Theatre, Surrey Little Theatre, Langley Little Theatre, and White Rock Players. Much love goes out to her family Scott, Hannah, and Em for supporting her theatre craziness and for being willingly dragged in to help!

TONY HEMSLEY (he/him)

Head Flyman

Excited to be back for another Align show. Working with Production crew, stage crew and all the wonderful performers I'm proud to be associated with so much talent! Enjoy the show!



VALENTINA PICARIELLO (she/her)

Backstage Crew

This is Val's second time working with Align, and she couldn't be more excited. Val is a student at Lindbjerg Academy and has been for the past 8 years. She has studied various styles of dance, singing, and musical theatre. Her past productions include: ensamble + dance captain in Wizard of Oz (DCSS), Patrice in 13 (Lindbjerg Academy), Thing 2 in Suessical (Align Ent.) and more. Val is also involved with her school's fine arts program, previously competing in New York this past April. From being seen on stage, her love for backstage has grown over the past years with her experience as a student teacher for junior theatre productions, and she learned many skills to bring to the crew. She would like to thank her mentors for the amazing opportunities, and she hopes you enjoy the show!



Kryptonite[®]

STONE WORKS

**Full service stone company
specializing in all types of
stone work:**

- Countertops
- Floors
- Walls

Types of stone:

- Marble
- Granite
- Limestone
- Basalt & Engineered Stones
- And more!



**"I like to say if it is made of stone. We do it."
- Riccardo Persiani, Owner**

Contact Us for a Free Quote!

604-813-2544

kryptonitestoneworks@gmail.com